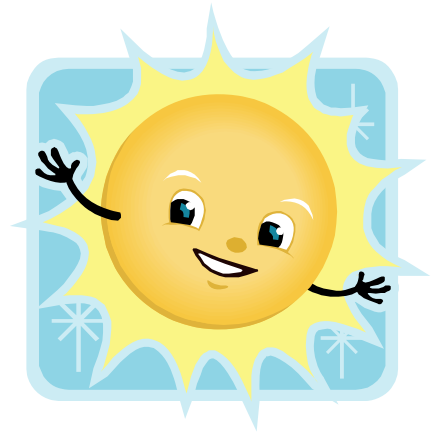


February 2, 2009

Dear Parents,

Even though the weather does not indicate it, summer will be here before we know it and many of us have started thinking about what options are available to us. The staff at The Train Station Preschool has been working hard to put together a program that we feel is quality.



We have entitled our program "Summer Fun" and will be accepting applications immediately. Our hours of operation will be 6:30 am through 6:00 pm.

Attached is a schedule of themes, an application and a fee schedule. If you are not currently enrolled in the preschool an enrollment fee of \$50.00 is required to hold a place for your child.

Please remember that our summer program is a fun enrichment program, combined with academic lessons. This year we will be using the Abeka Summer curriculum. We hope and pray it will be a fun filled learning experience for your child.

The following is a list of items your child will need each week:

- Lunch- We will provide milk and juice for those students who need it.
- Pillow and Blanket- If your child is here for a full day, he/she will be asked to rest on a cot.
- Complete change of clothes- Your child needs a labeled change of clothing in a labeled Ziploc bag. Please include all items such as shoes, socks, underwear, pants/shorts, and a shirt.
- Sunscreen- Each child needs to bring a labeled bottle of sunscreen to be left at school throughout the summer program. (spray on type is preferred) We will apply sunscreen daily ½ hour before going outside to play.
- Bathing suit and towel- Each child needs to bring a bathing suit and towel to school. This should be kept at school at all times for various activities throughout the week.
- If your child will be coming on Mondays he/she will need to bring a bike, roller blades, or scooter complete with a helmet, knee and elbow pads. These items should be dropped off at door B by the playground in the morning and picked up when you take your child home at the end of the day.
- Please look for notices on classroom doors for art supplies or special projects needs throughout the summer.

I know this is a lot of information all at once so if you have any questions please call me at 248-668-7035.

In His service,
Judi Sivyer

Program Director