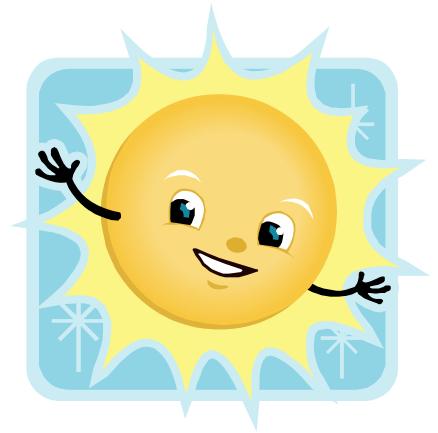


February 1, 2010

Dear Parents,

The staff at The Train Station Preschool has been working hard to put together a quality summer program.

We have entitled our program "Summer Fun" and are currently accepting applications. Our hours of operation will be 6:30 am through 6:00 pm.



Included is a schedule of themes, and information that you will need. If you are not currently enrolled in the preschool an enrollment fee of \$50.00 is required to hold a place for your child.

Please remember that our summer program is a fun enrichment program, combined with academic lessons. This year we will be using a combination of the Abeka Summer curriculum and creative lessons and activities planned by our qualified staff. We hope and pray it will be a fun filled learning experience for your child.

The following is a list of items your child will need each week:

- **Lunch**- You will need to pack your child a lunch and we will provide milk and juice for those students who need it.
- **Pillow and Blanket**- If your child is here for a full day, he/she will be asked to rest on a cot.
- **Complete change of clothes**- Your child needs a labeled change of clothing in a labeled Ziploc bag. Please include all items such as shoes, socks, underwear, pants/shorts, and a shirt.
- **Sunscreen**- Each child needs to bring a labeled bottle of sunscreen to be left at school throughout the summer program. (spray on type is preferred) We will apply sunscreen daily ½ hour before going outside to play.
- **Bathing suit and towel**- Each child needs to bring a bathing suit and towel to school. This should be kept at school at all times for various activities throughout the week.
- **Bicycle or roller blades**-If your child will be coming on Mondays he/she will need to bring a bike, roller blades, or scooter complete with a helmet, knee and elbow pads. These items should be dropped off at door B by the playground in the morning and picked up when you take your child home at the end of the day.
 - Monday Wheels day
 - Tuesday Health and nutrition day
 - Wednesday Travel day
 - Thursday Literacy day
 - Friday Water Day

I know this is a lot of information all at once so if you have any questions please call me.

In His service,
Judi Sivyer
Program Director
248-668-7035



The Train Station Preschool Summer Fun

5 full days	\$750.00 Per Month
5 half days	\$480.00 Per Month
4 full days	\$650.00 per Month
4 half days	\$400.00 per Month
3 full days	\$480.00 per Month
3 half days	\$325.00 per Month
2 full days	\$330.00 per Month
2 half days	\$215.00 per Month
1 full day	\$ 40.00 per Day
1 half day	\$ 26.00 per Day
Siblings	25% discount
Enrollment Fee	\$50.00

A full day is up to 10 hours per day during the hours of operation. A half-day is up to 4 hours any time during the hours of operation, which are 7am – 6pm